



RONALD McDONALD
HOUSE CHARITIES
CHICAGO AND
NORTHWEST INDIANA

2011



A Year of Critical
Support For Families
in Need



A note from Doug Porter, CEO, and Paul Huebener, Chairman, Board of Directors

Thanks to our generous friends, supporters, volunteers and donors, Ronald McDonald House Charities® of Chicagoland and Northwest Indiana (RMHC-CNI) was able to mark a monumental year of service to families and children in our community.

In 2011, RMHC-CNI remained steadfast in its commitment to operate critical programs to bring comfort, care, support, and assistance to families and children in need. The charity is also focused on expanding and streamlining our programs to ensure that our programs have the best possible impact in our service area.

RMHC-CNI focuses its operations primarily on housing the families of hospitalized children, which includes four Ronald McDonald Houses, a newly-launched Ronald McDonald Family Room in Edward Hospital in Naperville, and 16 sleep rooms in two hospitals in Chicagoland. In 2011, the charity focused its efforts on expansion of housing options to respond to the ever-growing needs of the community.

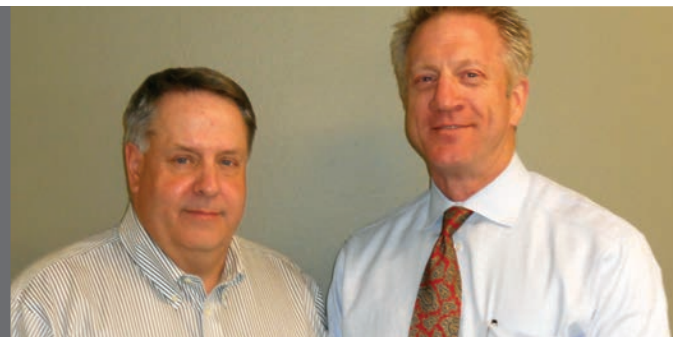
In addition to its housing support, RMHC-CNI also operates a Ronald McDonald Care Mobile, which provides vaccinations, school physicals and specialist referrals to underserved children, and a Scholarship Program which provides financial college assistance to highly motivated and economically challenged young people.

The mission of RMHC-CNI is truly unique to the communities we serve. Every dollar we raise is focused toward serving and improving the lives of families and children. Without RMHC-CNI, those with extremely limited or no options would be unable to stay close to their hospitalized children, receive necessary medical care or attend college.

Thank you for your support and commitment to the families and children we serve. With your help, we look forward to another year of playing a critical role in the lives of those less fortunate and in critical need.

Thank you.

“I couldn’t believe such a place existed. Not everybody can afford a hotel and the House makes it much easier to deal with an already potentially stressful financial situation.”



(L to R) Doug Porter and Paul Huebener

RMHC-CNI's Programs and Services

RMHC-CNI's primary mission and focus is to improve the lives of:

- the families of hospitalized children
- medically underserved children
- students who are unable to afford college



Patient Angelo Julian



Ronald McDonald Care Mobile



Matthew Hartigan, scholarship recipient

These groups are served by four distinct RMHC-CNI programs, uniquely positioned to serve families and children with the highest level of compassion, care and focus on positive outcomes. The charity's staff, board of directors and hospital partners each bring a specific area of expertise that allow us the opportunity to best care for those we serve.

Ronald McDonald Houses

Four Ronald McDonald Houses provide housing, meals and the comforts of home to the families of hospitalized children in Chicagoland. To optimally serve these families, the Houses are conveniently located within walking distance or short shuttle ride to the Ann and Robert H. Lurie Children's Hospital, University of Chicago Comer Children's Hospital, Loyola University Medical Center, and Advocate Hope Children's Hospital. In addition to Ronald McDonald Houses, RMHC-CNI also operates seven sleep rooms inside Comer Children's Hospital. Once the Ann and Robert H. Lurie Children's Hospital opens in June 2012, RMHC-CNI will operate nine sleep rooms inside the new hospital to serve the families of children in the ICU.

“Thank God the House was there for us. Everyone needs a place to stay to be close to their ill child.”

Mother of hospitalized child at University of Chicago Comer Children's Hospital

Ronald McDonald Care Mobile

The Care Mobile travels to the most distressed areas of Chicagoland to provide necessary care and referrals to children whose parents or guardians cannot afford insurance or a trip to the doctor. Without the Care Mobile's services, these children would fall behind in their vaccinations and well-checks, miss more school due to absences, and fall behind in school. On the road since 2008, the Ronald McDonald Care Mobile provides vaccinations, school physicals, and specialist referrals to the most underserved children in our area. Operated in partnership with Advocate Hope Children's Hospital, the Care Mobile is fully staffed with a nurse practitioner and a rotating staff of pediatric residents to provide the best care to our youngest clients.

“Thanks to all of your donors that make this service available to us, last year we were able to maintain 99.8% compliance with vaccinations.”

School nurse at participating school

RMHC-CNI Scholarship Program

The goal of the charity's Scholarship Program is to identify and invest in future leaders. RMHC-CNI awards four year scholarships to students who exhibit outstanding academic performance and a strong commitment to community service but limited financial resources. Students

are awarded funds for tuition and associated college expenses, ultimately opening doors to higher education and a brighter future.

“The generosity of RMHC-CNI has made it possible for me to attend one of the best universities in the country for the past two years. For that, my family and I are, and always will be very grateful.”

Matthew Hartigan, sophomore at the University of Michigan

Ronald McDonald Family Room®

The Ronald McDonald Family Room in Edward Hospital provides care and comfort to the families of hospitalized children. Similar to the first floor of one of our Ronald McDonald Houses, the Family Room serves as a haven of respite and hospitality to families, providing many of the comforts of home. Located just outside the Pediatric Intensive Care Unit and outpatient service area, the Family Room is approximately 1,700 square feet and includes a playroom for patients and siblings, a kitchenette, dining tables, television area, two computer stations and multiple sitting areas. Two private sleep rooms are also available for the parents of the most critical patients.

“The room definitely made our stay easier. It enabled us to get away and have an emotional release. The playroom for our little one and his brother was the best.”

Family who utilized the Family Room

21,576
Family nights provided to families of children in medical crisis

31
Students have graduated from college over the last seven years

46%
Of guest families could not have chosen the same care for their child had the House not been available

32
Students assisted with college tuition

\$128,000
In financial assistance provided to students

2,138
Children provided with vaccinations and physicals

Impacting the Lives of Families and Children

In 2011, RMHC-CNI remained focused on the care of families and children across our four programs. With the invaluable help of our board of directors, donors, volunteers and staff, the charity was able to meet the needs of more people than ever before.

The families and children we serve, along with our committed hospital partners and universities, consistently express the immeasurable impact the charity has had on their lives and the lives of others.

Whether families are allowed the opportunity to rest, rejuvenate and stay close to their sick child, a child receives a necessary vaccination and check-up, or a student attends and graduates from college, RMHC-CNI strives to have a profound impact on the lives of those we touch.

Surveys of guests at our four Houses and our seven sleep rooms, feedback from Care Mobile staff and patients, and heartfelt thanks from students in our Scholarship program, prove that RMHC-CNI has significantly improved the lives of those we have served.

“Thank you for providing these services to people in need. In the name of all of the parents that you have helped by providing medical attention to their children, I thank you.”

- mother of child who received care on the Care Mobile

“We were so miserable going through this and the staff always gave me a hug and said they were praying for us. The staff in the sleep rooms was so wonderful.”

- mother of child who went to Heaven in 2010 and who utilized the sleep rooms at University of Chicago Comer Children's Hospital

“I am very proud to say that I will be going to Northwestern University in the fall. I was one of twenty-five students chosen for their Master's in Counseling Psychology program. I know these future plans probably would not exist without the support of all the wonderful folks at RMHC-CNI!”

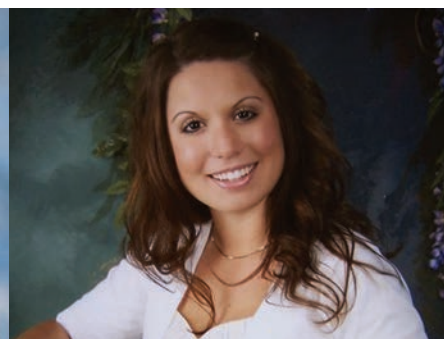
- scholarship recipient and senior at the University of Chicago



Child receives care on the Care Mobile



Vincent Villacci, who went to Heaven in 2010



Amanda Gallegos, scholarship recipient and senior at University of Chicago

Expanding Our Services



New Ronald McDonald House near Lurie Children's



Ribbon cutting ceremony for new Ronald McDonald Family Room in Edward Hospital



Groundbreaking ceremony for new Ronald McDonald House near Lurie Children's

In 2011, RMHC-CNI continued to fulfill its mission of improving the lives of families and children in their time of greatest need. More than 21,000 family nights were provided to families at our Houses, 2,100 children were provided with vaccinations and physicals, and 32 students received critical tuition assistance to attend college.

We are proud of the number of families and children RMHC-CNI was able to serve in 2011. While the numbers are impressive, the charity is always concerned about the numbers of families we turn away every year due to capacity constraints. In 2012, RMHC-CNI will dramatically increase its services, providing additional housing capacity and options for the families of hospitalized children.

A New Ronald McDonald House

On June 26, 2012, RMHC-CNI will officially open a 14-story, 86-room Ronald McDonald House to serve the families of hospitalized children receiving care at the new Ann & Robert H. Lurie Children's Hospital (Lurie Children's). The new House will provide

families with a private bedroom and bathroom, access to community kitchens and living spaces, home-cooked meals, laundry facilities and camaraderie with other families facing similar challenges. Exclusive features in the new House will include window seats and blackout drapes in each bedroom and a beautifully landscaped rooftop healing garden.

The new House will devote two floors to transplant patients who require specialized transitional care. In keeping with our policies chapter-wide, families will be referred from Lurie Children's to the new House by social workers at the hospital.

In addition to serving the families of children receiving care at Lurie Children's, RMHC-CNI has entered into two unique agreements with The Rehabilitation Institute of Chicago (RIC) and Almost Home Kids (AHK). Both organizations will each lease one floor in the new House to provide housing exclusively for their patients and their families.

Once the new House is open, RMHC-CNI's capacity to house and care for the families of children hospitalized at Lurie Children's will increase by 75%.

Nine New Sleep Rooms Inside Lurie Children's

RMHC-CNI will operate nine sleep rooms inside Lurie Children's, providing accommodations to the families of children in the Intensive Care Unit. The Sleep Rooms provide families with a private bedroom and bathroom and a common family area to allow respite from the hospital environment.

A New Ronald McDonald Family Room

The first Ronald McDonald Family in Illinois will open inside Edward Hospital in Naperville, Ill. in February 2012. The opening of the Family Room is an extension of RMHC-CNI's commitment to improving the lives of children and families in our community.

In 2012, RMHC-CNI will provide:

140
Bedrooms for families

18
Sleep rooms inside hospitals

31,000
Family nights to families

Caring for Families and Children

The Brownlee Family and Baby Sophia



Parents Renee and Joe Brownlee walked through the doors of the Ronald McDonald House near Children's Memorial Hospital in August 2010 while their nine-day-old baby underwent surgery to begin correction of a congenital heart defect. The House ultimately provided comfort and care to the family over the course of the next five months.

Prior to her birth on July 28, 2010, Sophia had been diagnosed with hypoplastic right ventricle syndrome, which refers to the underdevelopment of the right side structures of the heart.

At nine days old, Sophia underwent her first of three scheduled surgeries to address her heart defect. A pulmonary artery band was placed around the pulmonary artery, which restricts the blood flowing to the lungs.

In mid-August, Sophia came home and did very well for eight weeks. Unfortunately, when her health began to deteriorate, Sophia was admitted to the Pediatric Intensive Care Unit at Children's

Memorial for evaluation. The family describes this time period as one of their most tumultuous.

Joe, Renee, and Joe's mother Kay utilized the House while doctors evaluated Sophia and determined that she would require another heart surgery. The Brownlees appreciated the support the House provided. "The House gave us the feeling that we were in our own house," Joe said. "When you get into the zone of having a sick child, the House is a place where you don't have to worry about anything other than your child," he said.

On November 21, Sophia underwent a Glenn operation, which diverts all the blood coming back from the upper body through the Superior Venacava (the major vein coming from the upper body). After the procedure was performed, Sophia was stable, but was unable to eat, breathe on her own, or survive without medication.

Three weeks after her second heart surgery, doctors determined that she

needed to be placed on the transplant list. The family anxiously awaited word that a heart would become available for their baby.

Good news arrived on the morning of December 24. Once the donor heart arrived at the hospital, Sophia underwent surgery to reverse the Glenn operation and to receive her new heart. When doctors told the Brownlees that the surgery was a success, they returned to the House to sleep and enjoy the peaceful feeling of home on Christmas Day.

Sophia woke up 36 hours after her surgery and immediately began to thrive. While Sophia recovered, the Brownlees relied on the support from other families at the House. "We were able to learn from other families who helped set our expectations for Sophia's recovery," Renee said.

Sophia is now home with her parents, brother Quinn and little sister Kara who is 10 months old.



“The support the House provides is something that has an immediate impact on the lives of families.”

Renee Brownlee, mother of Sophia

A Donor's Perspective

MaryAnne Smith

MaryAnne Smith, a devoted mother, grandmother and wife of Chicago Bears Coach Lovie Smith, first became involved with RMHC-CNI in 2008 after she witnessed a child in the hospital die without its parents present. Although she did not personally know the child or the parents, she was deeply affected by the experience. "The parents couldn't afford to stay with their child and I couldn't bear the idea of a child dying alone. I believe that it is a right from God that mothers should be with their child when they are sick or when they

take their last breath," she said.

MaryAnne committed herself to exploring options for families and became aware of the Ronald McDonald House near Children's Memorial and its critical services.

She learned that while the current Ronald McDonald House served as many families as it could, it had a consistently lengthy waiting list. The great news was that a new House was being built that would allow RMHC-CNI to accommodate

more families than ever before. When asked to become Honorary Chairpersons for the capital campaign to build the new House, MaryAnne and Lovie enthusiastically agreed.

Since they first became involved four years ago, the Smiths have tirelessly supported RMHC-CNI's campaign to build the world's largest Ronald McDonald House in Chicago. "I realize with all the blessings I have been given, the right thing to do is to give to others," MaryAnne said.



Tim Nevins

Tim Nevins first became acquainted with the value of Ronald McDonald Houses when a close friend told him about his phenomenal experience at a House in New York. The friend expressed his gratitude for the cost-avoidance, convenience and support system associated with staying at a Ronald McDonald House. One year later, Tim and his wife experienced the heartbreak of having a child born with medical issues that required hospitalization. Unfortunately, there was not a Ronald

McDonald House near the hospital and Tim and his wife were forced to sleep in the nurse's station. These two experiences provided Tim with a unique perspective on the charity and its invaluable services.

In 1998, Tim began working more closely with McDonald's on behalf of his employer, McCain Foods. He was delighted to discover that the founders of McCain Foods had a long heritage of contributing to and supporting Ronald McDonald House Charities. Tim was pleased to find

a natural progression to become more involved with RMHC-CNI on behalf of his company and himself.

In 2008, Tim became a board member of RMHC-CNI and has since chaired RMHC-CNI's annual golf tournament and been an active member of the fundraising committee. "Among charities, RMHC-CNI is one of the best. It has a proven track record of providing a real benefit for families in need," Tim said.



Denise Howe

Denise Howe is the mother of three young children and past president of the 150-member Hinsdale Junior Women's Club (HJWC). She became involved with RMHC-CNI when the club committed to designate funds from annual fundraisers in 2010 and 2011 to support the charity. As part of their commitment to RMHC-CNI, HJWC specifically selected the Ronald McDonald Family Room in Edward Hospital to receive funds raised and community service efforts for two years.

HJWC's annual fundraising event in 2012, "Clubbin' For A Cause", brought together 525 people who stepped away from their own families to help other families. The event raised \$200,000, and the prior year's event raised \$117,000, which allowed HJWC to help RMHC-CNI build, furnish and open the Family Room in February 2012. "The women associated with HJWC were thrilled to support the Family Room because we can all see ourselves in the trying situation of having a hospitalized child," Denise said.

Denise considers her involvement with RMHC-CNI to be a life changing endeavor as she grew to know the charity and its staff. "Other than the births of my children, the things I am most proud of are being president of HJWC and supporting the Ronald McDonald Family Room," Denise said. Even though Denise has now passed the baton to another president of HJWC, Denise says she will personally remain connected and involved with the charity in the years to come.



34,700
Meals served to families at Houses

65,000
Volunteer hours donated

\$5.5 mil
Saved by families in 2011

\$7.75 mil
Saved by families in 2012

75%
Amount by which the charity will increase its capacity in 2012

Donors Annual Giving

\$250,000-\$499,999

McDonald's Owner Operators of Chicago and NW Indiana

\$100,000-\$249,999

Griffith Laboratories U. S. A.
Hinsdale Junior Women's Club
Macy's
McDonald's Corporation

\$50,000-\$99,999

Five Star Audiovisual, Inc.
JoAnn, Christine and Jeff Cantalupo
Ken's Beverage, Inc.
McCain Foods, Inc.
Ronald McDonald House Charities-Global
The Coca-Cola Company

\$25,000-\$49,999

Ariel Investments, LLC
ConAgra Foods - Lamb Weston
Dr Pepper Snapple Group
Kenneth E. Wegner Trust
LAMAS Foundation
Learning Care Group
McDonald's Corporation Matching Gift Program
Mr. and Mrs. Doug Porter
RAM Racing
Running for Hope
The Chicago Community Foundation
United Scrap Metal, Inc.

\$10,000-\$24,999

Accuen
Affiliated Computer Services, Inc
Antonovich Associates
Blue Cross Blue Shield of Illinois
Bulley & Andrews
Chef Dan & The Appetizers
Coinstar, Inc
Creaa Promotion USA
DreamWorks Animation SKG
Ecolab/Kay Chemical Company
FedEx Office
Florida Plastics International Inc.
Full Circle Group
Galaxie Construction
Gammon Charitable Foundation, Inc.
Golden State Foods
Golden State Foods Foundation
James & Sons Fine Jewelers
Keystone Foods, LLC

LBP Manufacturing, Inc.
Leo Burnett Company
McDonald's Greater Chicago Region
Morgan Stanley
Mr. and Mrs. Chris Singleton
Mr. and Mrs. Herve' De La Vauvre
Mr. and Mrs. Jim Marzullo
Mr. and Mrs. Jose Armario
Mr. and Mrs. Ron Lofton Sr.
Mr. and Mrs. Thomas Kloet
Mr. and Ms. Mayur Patel
Mr. Joseph D'Amico
Mr. Rich Floersch
Ms. Sheila J. Musolino and Mr. Michael Giambrone
Mullins Food Products, Inc.
Restaurant Technologies, Inc.
Rexam Beverage Can Company
S & D Coffee, Inc.
The Bama Companies, Inc.
The CarMax Foundation
The San Francisco Foundation
True, LLC
United Soccer Academy
Wright Management Co., Inc.

\$5,000-\$9,999

Advocate Christ Medical Center & Hope Children's Hospital
Alamance Foods, Inc.
Allstate Giving Campaign
Aon Foundation
Beavers Holdings
BPI Group
Cargill, Inc.
Contrast Design Group
East Balt, Inc.
Fifth Third Bank
Five Star Decorating Inc.
Foltos Tonsorial Parlor
Ford Motor Company
GATX Corporation
Georgia Pacific
Glass Solutions, Inc.
Golden State Foods Corp.-Strategic Sourcing Alliance
HAVI Global Solutions
Hayes Beer Dist. Co.
Higgins & White, Inc.
IMS / Group II Communications
International Academy of Design and Technology
J.R. Simplot Company
Johnson & Johnson Matching Gifts

Program
Kenzie Corp
Keystone Display Inc
Kraft Foods
Mancari's Chrysler Jeep Dodge Ram, Inc
McDonald's Hispanic Owner-Operators Association
McDonald's USA
MDW Provisioning
Merisant Company
Microsoft Corporation Matching Gifts Program
Mr. and Mrs. Angelo Karavites
Mr. and Mrs. Bruce Taylor
Mr. and Mrs. Donald A. Keyser
Mr. and Mrs. Joseph P. Endress
Mr. and Mrs. Lovie Smith
Mr. and Mrs. Ryan Schiff
Mr. and Mrs. Thomas J. Leonard
Mr. and Ms. Ward Hamm
Mr. Bruce Litt
Mr. Joe Maslick
Mr. Ken R. Norgan
Mr. Robert Tippin
Ms. Danya Proud
Ms. Lorraine Nelson
Ms. Marion Gross
Ms. Wilhelmine E. Long Rev. Living Trust
Newly Weds Foods, Inc.
Northbrook Jr. Board for RMH
OSI Industries
Redbox Automated Retail, LLC
Reed Family Foundation
Schreiber Foods
Solano-De Carrier Management Co., LLC
The Derickson Foundation
The Hershey Company
The Porsche Exchange
Tyson Foods, Inc
Underwriters Laboratories Inc.
We Clean Maintenance & Supplies, Inc.

\$2,500-\$4,999

A & E Television Networks
Abbott Laboratories Employee Giving Campaign
Action Booth
Advent Systems, Inc.
Alpha Delta Pi, Delta Omega Chapter
Baldwin Richardson Foods, Co.
Baxter International
Black McDonald's Operators Association
Building Services of America

CH Guenther & Son Inc.
Chicago Great Clips Co-op
Children's Memorial Hospital
CMGRP Inc.
Danaco Solutions LLC
Daugherty Systems
Dearborn National
Deloitte LLP
Dr. A. J. Hotaling
Dr. and Mrs. Alan Lerner
Dr. and Mrs. Mark Butterly
Everbite, LLC
Exelon United Way System Office
Gene Callahan
Givaudan Flavors
Golin Harris
Gorton's Inc
Hofmann Family Foundation
IBM Employee Services Center
Island Oasis
JMB Insurance Agency Inc.
John B. Sanfilippo & Sons, Inc.
Joliet Junior College
JP Morgan Chase Foundation
KemperLesnik
Kerry Group
Kohl's
KPMG LLP
Lorraine Nelson Consulting, Inc.
Loyola Center for Health & Fitness
M&M Mars
MC2
McClement Management Group
Microsoft
Miss Bridget Carey
Miss Carrie Schwarz
Mr. and Mrs. Bill Budig
Mr. and Mrs. Bob Raidt
Mr. and Mrs. Christopher Pieszko
Mr. and Mrs. Daniel Aucunas
Mr. and Mrs. David Van Eekeren
Mr. and Mrs. Donald George
Mr. and Mrs. Gregory T. Koerner
Mr. and Mrs. James R. Petrowich
Mr. and Mrs. Jim Boyles
Mr. and Mrs. Joe D'Amico Jr.
Mr. and Mrs. Joseph D'Amico Sr.
Mr. and Mrs. Michael Kregor
Mr. and Mrs. Michael Wolfe
Mr. and Mrs. Mike Flores
Mr. and Mrs. Mitchell Lowe
Mr. and Mrs. Paul Huebener
Mr. and Mrs. Paul R. McNaughton

Mr. and Mrs. Roger C. Buddig
Mr. and Mrs. William Gundlach
Mr. and Mrs. William W. Keyser
Mr. Bill Stephen
Mr. Bob Cappalli
Mr. Dave Petersen
Mr. Jim Norberg
Mr. John Stote
Mr. Rob Engelking
Mrs. Christy Andersen
Ms. Carol Poremba
Ms. Diane DeMers
Ms. Evelyn Duff
Ms. Gillian Gitchell
Ms. Lesley Prizant Goodman
Ms. Sue Conley
MSL Group
NSA IL Humanitarian Foundation
Olam International Ltd.
Olympia Fields Country Club
OMD
Orlando / Orange County Convention & Visitors Bureau, Inc
Perseco
PGA of America
Quin Early Childhood PTA
R.J. Nelson Enterprises Ltd.
Rehabilitation Institute of Chicago
Roofing Source
Rose Packing Company Inc.
Schmitt Management
Schwab Charitable Fund
Seegerdahl Group
Taylor Farms California
The Chicago Bulls
The For Julie Foundation
The Horton Group
The Kennedy-Cooper Consultants Group
The Marketing Store Worldwide
Thorn River Foundation
Thornton Township
TTX Company
Unico National- Chicago Chapter
United Airlines
Vita-Pakt
Walter Daniels Construction Co. Inc.
Wichita Packing Co.
Wirtz Beverage Group
Wm. Wrigley Jr. Company
Wynnstarr

\$1-\$2,499

7,035 donors

Capital Campaign

The Opening New Doors Campaign is a five-year capital campaign initiative to build the Ronald McDonald House® near Lurie Children's. The following donors have generously supported this effort through a pledge, cash or in-kind donation through June 2012.

\$1,000,000+

Anonymous
Anonymous
McDonald's Owner Operators of Chicago and NW Indiana

\$250,000-\$499,999

The Cantalupo Family and Airpayers
Mr. and Mrs. William Chunowitz
Dr Pepper Snapple Group
George M. Eisenberg Foundation for Charities

Golden State Foods Foundation
Mr. and Mrs. Allen Gustafson
John B. Sanfilippo & Son, Inc.
Keith Relief Foundation
McDonald's Corporation Matching Gift Program
McDonald's All American Basketball Game
Newly Weds Foods, Inc.
Mr. Ken R. Norgan
Taylor Company*
True, LLC

Tyson Foods, Inc

\$100,000-\$249,999

Annie's Fun
Anonymous
Anonymous
Mr. and Mrs. Robert M. Beavers Jr.
Bulley & Andrews
Cetco*
Chicago Great Clips Co-op Advertising Fund

Mr. and Mrs. Paul Clark
Coldwell Banker
ConAgra Foods - Lamb Weston
Estate of Ludwig W. Streifeneder
Fifth Third Bank
Grainger Foundation
Griffith Laboratories U. S. A.
Grubb & Ellis Company
Harris Family Foundation
Rock the House
Keurig Inc.

McCain Foods, Inc.
McDonald's Technology Charity Classic
Ozinga
Mr. and Mrs. Doug Porter
Mr. Edward F. Powrozek
Ronald McDonald House Charities-
Global
Ms. Marsha Serlin
Mr. and Mrs. James A. Skinner
Square D / Schneider Electric*
Tempurpedic*
The Coca-Cola Company
The Elizabeth Morse Charitable Trust
United Scrap Metal, Inc.
USG Foundation
Women's Auxiliary for the RMH near
Lurie Children's

\$50,000-\$99,999

Andrew Family Foundation
Mr. and Mrs. Greg Baird
Baldwin Richardson Foods, Co.
Mr. James Bay
Mr. and Mrs. Beitler
Benjamin Moore & Co.
Mr. and Mrs. Peter J. Jensen
Mr. and Mrs. Bill Budig
Cargill, Inc.
Carton Craft
Chicago Blackhawk Alumni Assoc.
Mr. Don L. Crosby
Mr. and Mrs. John De Carrier
Driehaus Capital Management LLC
DuPont*
Mr. and Mrs. Joseph P. Endress
Ms. Jan L. Fields and Mr. Doug Wilkins
Footprints Foundation
Mr. and Mrs. Mark V. Freeman
Mr. and Mrs. J.C. Gonzalez-Mendez
Grant Thornton LLP
Haworth*
J.D.D. Investment Company
Mr. and Mrs. James Johannesen
Mr. and Mrs. Angelo Karavites & Mr.
and Dr. Nicholas Karavites
Mr. and Mrs. William W. Keyser
Kohler Co.*
Mr. and Mrs. Frank L. Kuchuris
La Z Boy Inc.*
Mr. and Mrs. John Lardas Sr.
Mr. and Mrs. Eric W. Leininger
Mr. and Mrs. Lawrence Linman
Locke Lord Bissell & Liddell LLP
Lott Management Inc.
Ms. Paula Marshall
Mr. and Mrs. Rick McGrath
Mr. Bill's Century Ride
Ms. Sheila J. Musolino and Mr. Michael
Giambrone
Ms. Lorraine Nelson
Mr. and Mrs. Kevin Newell
Northern Trust Charitable Trust
Mr. and Mrs. John O'Keefe
Mr. and Mrs. Christopher Pieszko
Mr. and Mrs. Dave M. Pojman
Receptions for Research, The Greg
Olsen Foundation
Rose Packing Company Inc.
Ms. Christine Schenk and Mr. Ernest
Cochanis
Mr. and Mrs. Paul Schrage
Ms. Jean Silva
Mr. and Mrs. Chris Singleton

Starwood Hotels
Mr. and Mrs. Jeffrey P. Stratton
Mr. and Mrs. Charles E. Strong
Tellabs Grants for Giving Program
Mr. and Mrs. Don Thompson
Mr. Fred Turner
We Clean Maintenance & Supplies, Inc.
Mr. and Mrs. David Weick
Wright Management Co., Inc.
The Sun Times Foundation/Chicago
Community Trust

\$25,000-\$49,999

Mr. and Mrs. James Brady
Building Services of America
Carylon Foundation
Christiaan Pretorius Studio*
Mr. and Mrs. Timothy Cole
Mr. and Mrs. George H. Cumpata
Mr. and Mrs. John Dakajos
Mr. and Mrs. Mark A. Duffy
Mr. Ben Erskine
Mr. and Mrs. Rich Floersch
Mrs. Maura Havenga
A. J. Hotaling, M.D.
Illinois PGA Foundation
Interface Flooring*
Mr. and Mrs. Nicholas Karavites
Dr. and Mrs. Jerome Kaufman
Ken's Beverage, Inc.
Mr. and Mrs. Gregory T. Koerner
Mr. and Mrs. Michael Kregor
Mr. and Mrs. Rich Melman
Mr. and Mrs. Timothy C. Nevins
Noland Sales*
Nordstrom
Mr. and Mrs. Robert Olson
Ronald McDonald House near CMH
Auxiliary Board
Mr. and Mrs. Todd Schaefer
The Simon Family
Mr. and Mrs. Lovie Smith
The Field Foundation of Illinois

\$10,000-\$24,999

520*
ABT Electronics
Aileen S. Andrew Family Foundation
Mr. and Mrs. Joe Antunovich
Artists for Artglass*
Bears Care
Blowitz-Ridgeway Foundation
Mr. and Mrs. Steven M. Brunner
Mr. and Mrs. Blanton Canady
Mr. and Mrs. John Carnagio
Mr. and Mrs. Maneesh K. Chawla
Mr. and Mrs. Bryan Console
Mr. and Mrs. Michael F. Cronin
Mr. and Mrs. Herve' De La Vauvre
Denis Savard Foundation
Mr. Eric Donovan
Mr. and Mrs. Michael F. Doody
FedEx Office
Five Star Audiovisual, Inc.
Florida Plastics International Inc.
Mr. Bob Geoghan
Mr. Mark Giangreco
Mr. and Mrs. Chris Glass
Ms. Lesley Prizant Goodman
Mr. and Mrs. William Gundlach
Mr. and Mrs. Michael Haberkorn
Mr. and Mrs. Frank J. Haggerty Jr.

Ms. Nancy Henn Living Trust
Ms. Lindsay Hickey
Hoys International
Mr. and Mrs. Paul Huebener
Illinois Association of Jr. High Student
Councils
Jewell Events Catering
Mr. and Mrs. Garrett Wheeler
Keystone Foods LLC
Kinsella Landscape Inc.*
Mr. and Mrs. Ken Koziol
Dr. and Mrs. Ricardo Laguatan
Mr. and Mrs. Thomas J. Leonard
Leopardo Companies
Mr. and Mrs. Ron Lofton Sr.
Maron Electric*
Mr. and Mrs. Joe Maslick
Ms. Zella M. McClure
Mr. and Mrs. John R. McDaniel
Micole Foundation
Mr. Estate of Lawrence J. Molinelli
Mullins Food Products, Inc.
Nor-Lake*
Mr. Kevin M. Ozan
Mr. and Mrs. James R. Petrowich
Phil Stefani Signature Events and
Restaurants*
Mr. and Mrs. Edward Rensi
Rubbermaid*
Mr. Harry Schildkraut
Mr. Mark Shouger
Skender Interiors Group LLC
Stevenson Crane Service Inc.
Mr. and Mrs. Rich Stoddart
The Options Clearing Corporation
Mr. Robert Tippin
Mr. and Mrs. David B. Vermeylen
Mr. Denis Weil
William A. Burns Living Trust
Mr. and Mrs. Darrell Winbush
Mr. and Mrs. Ralph Wright

\$5,000-\$9,999

Mr. and Mrs. Robert Abt
Mr. and Mrs. Edward Andrew
AVB BrandSource
Mr. and Mrs. Edgar L. Barnett
Cassiday Schade LLP
Chicago Land Chapter of YPO
Mr. and Mrs. Robert Cooney
Mr. and Mrs. Tom Covelli
Covidien
Mr. and Mrs. James De Maria
Mr. and Mrs. Howard Draft
East Balt, Inc.
Mr. Gregory Ellison
Mr. and Mrs. Dave Evans
Mr. and Mrs. Mike Flores
Fresh Farms
Mr. and Mrs. James Gannon
Mr. and Mrs. James J. Gotch
Mr. and Mrs. Brian Griffith
H & K Dallas Inc.
Mr. Almous Harrod
Mr. and Mrs. Peter C. Hendrick
Hinsdale Bank & Trust
Hub 51
Ms. Cathy Hufford
J.R. Simplot Company
Kick Off for Kids
Mr. and Mrs. John R. Knazur
Mr. and Mrs. Michael J. Kotynek

Leo Burnett Company
M. Block And Sons, Inc.
Ms. Judy Majic
McDonald's Greater Chicago Region
Mr. and Mrs. Matt Mitchell
Mr. Jim Norberg
Mr. and Mrs. Brian Friel
Mr. Tom Parisi
Mr. Theodore F. Perlman
Prairie Capital Advisors
Reed Family Foundation
Richard E. Frain Charitable Foundation
Mr. John W. Robbins
RR Donnelley Foundation
Mr. and Mrs. Tim Rudderow
Ms. Patricia Schoenberg
Mr. and Mrs. Paul J. Sestak
Ms. Laura Shallow
Mr. and Mrs. Steve Silvers
Mr. and Mrs. Matthew Smith
Mr. and Mrs. Russ Smyth
Mr. Jeffrey Steren
Mr. and Mrs. Charles Stone
Mr. Sven Sykes
Mr. and Mrs. Bruce Taylor
The Color Room Salon & Day Spa
The Northridge Group
The Schrage Shoe Golf Tournament
The Yacyshyn Family Charitable Fund
Tommy R's Catering
Ms. Cristina Vilella
William Blair & Company Foundation
XR Trading

\$2,500-\$4,999

023-Alpha Tau Omega
Altametrics
Artists and Brands LLC
Ms. Lora Batdorff
Mr. Mark Bazzetta
Ms. Cathy E. Berk
Bison Gear & Engineering Corp.
Mr. and Mrs. David Boggess
Ms. Cindy Borland
Cedar Hill Associates, LLC
Mr. Eric A. Ceputis
Charlie Trotter's
Mr. Eric Claudio
Mr. and Mrs. Kevin Convery
Mr. and Mrs. Mike Corbett
Curtis Design
Mr. and Mrs. Norman Dick
Mr. and Ms. Craig Donath
Ewing-Dougherty
Florida Plastics Spirit Team
Mr. and Ms. Jeff Forsell
Mr. James Hoag and Mrs. Marcia Glenn
Glenview State Bank
Global Experience Specialists, Inc
Golden State Foods
Mr. and Mrs. Pancho Gonzalez
Mr. and Mrs. Daniel Gorsky
Ms. Michelle Greenwood
Mr. and Mrs. Brian Gross
Harbor Capital Advisors, Inc.
HAVI Global Solutions
Mr. and Mrs. Daniel P. Herrmann
Holland & Knight LLP
Insight
Ms. Ubong Ituen
Mr. and Mrs. Roger C. Buddig

John F. and Joan P. Mullins Charitable
Foundation
Johnson & Johnson Matching Gifts
Program
Ms. Tara Kamradt
Mr. Marc Kaplans
Mr. and Mrs. Timothy F. Kennedy
Mr. Dale Laidlaw
Ms. Latanya Lane-Albala
Mr. and Dr. Lederhausen
M&M Mars
Martin-Brower Company
Mr. and Mrs. Scott McClement
McDonald's Store #4299
Mr. Greg McMaster
Mikey Corbett Children's Cancer
Fund, Inc.
Ms. Phyllis Mohlar
Ms. Janice Nelson
NetJets, Inc.
Mr. Bruce Norgan
OSI Industries
Mr. Bob Pancoast
Mr. and Mrs. John Perrone
Polk Bros. Foundation
Project Leadership Associates, Inc.
Mr. Greg Purcell
Mr. Rick Radek
Restaurant Technologies Inc
Ronald McDonald House of Dallas
Dr. Ruby Roy and Dr. Thomas Busse
Mr. Brian Salerno
Mr. and Mrs. Eric Schmidt
Ed Schmitt
Ms. Nancy Slattery
Mr. and Mrs. Dennis Stabile
Mr. John Sterling
Sun Trading
Mr. and Mrs. Michael S Teitelbaum
The Horton Group
Ms. Christina Thomas
Toyota Financial Services Central Region
Mrs. Kathy Tracy
Unilock Chicago, Inc.
United Way of Metropolitan Chicago
Van Cleef & Arpels
Ms. Misa Verbeek
Verizon Business
VIP Valet Services, Inc.*
Whitney Inc.
Mr. and Mrs. Harry Willett
Mr. and Mrs. James Willett
Wintrust Commercial Banking
Ms. Andi Zwit

\$1-\$2,499

4,355 donors

* In-kind donation

We gratefully acknowledge gifts received during fiscal year 2011. Although every effort is made to avoid errors, occasionally an error may occur. Please accept our sincere apologies if your name has been omitted or incorrectly spelled or listed. We would appreciate it if you would notify us so we can make corrections to our records. Please contact Jim DeMaria at 630.623.2309.

Financial Information

Ronald McDonald House Charities® of Chicagoland and Northwest Indiana

Financial Statements (in Dollars)
As of December 31, 2011

Balance Sheet

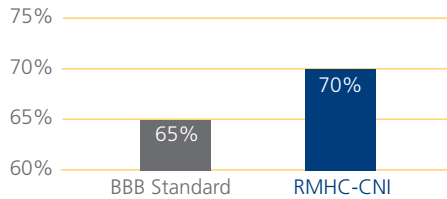
Assets	2011	2010
Cash and Cash Equivalents	1,833,693	4,710,460
Investments	1,148,527	1,258,448
Due from Unrestricted Fund	75,980	-
Contributions Receivable	6,422,997	8,415,789
Prepaid Expenses	306,051	231,873
Property and Equipment (net of accumulated depreciation)	44,739,795	25,996,070
Total Assets	54,527,043	40,612,640
Liabilities and Net Assets		
Accounts and Grants Payable	1,878,497	205,007
Accrued Expenses	-	394,892
Due to Permanently Restricted Fund	75,980	-
Construction Contract Retainage	1,136,799	-
Deposits	50,000	-
Line of Credit	6,045,618	-
Related Party Payable Advance on Contractual Proceeds	3,703	349,173
Advance on Contractual Proceeds	400,000	400,000
Accrued Expenses	2,053,102	-
Total Liabilities	11,643,699	1,349,072
Net Assets	42,883,344	39,263,568
Total Liabilities and Net Assets	54,527,043	40,612,640

Income Statement

Support and Revenue	2011	2010
Fund Raising Events (net)	2,958,283	3,348,344
Other Contributions	5,705,097	10,088,998
Other Revenue		
Room Rental and House Operations	155,159	141,668
Net realized and Unrealized Gain on Investments	(147,039)	136,114
Interest and Dividends	40,008	10,693
Total Support and Revenue	8,711,508	13,725,817
Expenses		
Program Services		
House Operations	3,124,072	3,165,905
Grants and Scholarships	297,766	308,258
Indirect Fundraising Costs	727,431	501,911
Management and General	726,736	638,282
Total Expenses	4,876,005	4,614,356
Change in Net Assets	3,619,776	8,919,754
Transfer of Net Assets	0	0
Net Assets, Beginning of Year	39,263,568	30,343,814
Net Assets, End of Year	42,883,344	39,263,568

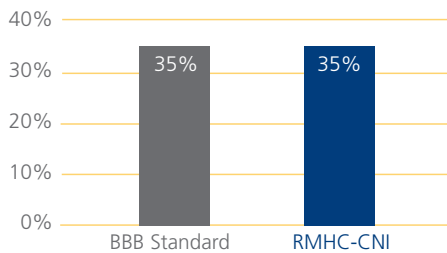
Exceeding Financial Standards

RMHC-CNI adheres to the Better Business Bureau's Standards for Charitable Accountability*. In 2011 our results versus the Standards were as follows:



Spend at least 65% of its total expenses on program activities

Yes No



Spend no more than 35% of related contributions on fund raising**

Related contributions include donations, legacies, and other gifts received as a result of fund raising efforts.

Yes No

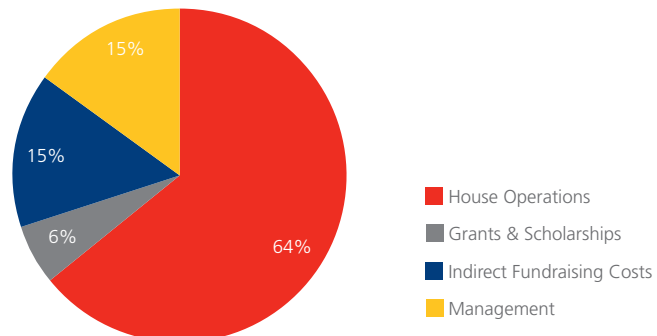
**2011 was an extraordinary year. We planned for increased fundraising infrastructure costs in preparing to open the new Ronald McDonald House. In 2012 and beyond we expect our fundraising ratio to return to the previous 10 – 15% range.

Avoid accumulating funds that could be used for current program activities. To meet this standard, the charity's unrestricted net assets available for use should not be more than three times the size of the past year's expenses or three times the size of the current year's budget, whichever is higher.

Yes No

*The BBB Wise Giving Alliance Standards for Charity Accountability were developed to assist donors in making sound giving decisions and to foster public confidence in charitable organizations. The Standards seek to ensure that the charity spends its funds honestly, prudently and in accordance with statements made in fund raising appeals.

Your Donations At Work



2011 BOARD OF DIRECTORS:

Paul Clark, Chairman Emeritus
Mike Kotynek, Chairman
Paul Huebener, Vice Chairman
Mary Haggerty, Treasurer
Todd Schaefer, Secretary
Jim Brady
Steve Brunner
Mark Butterly, M.D.
Don Camp
Maneesh Chawla
Mike Cronin
Carmen DeCarrier
Mark Duffy
Greg Ellison
Meg Floersch
Mark Freeman
Mary Herrmann
A.J. Hotaling, M.D.
Bill Keyser
Greg Koerner
Patty Kryscha
Dean Lane
Sheila Musolino
Lorraine Nelson
Tim Nevins
Jim Norberg
Jim Petrowich
Dave Pojman
Sue Singleton
Charlie Stone
Liz Thompson

NEW BOARD MEMBERS 2012:

Melvin Buckley
Bill Budig
John Carnagio
Joe Endress
Jodi Keller
Mike Kregor
Mary Leonard
Lisa Newman
John O'Keefe
Brian Salerno
Michael Thompson

www.ronaldhousechicago.org

RMHC-CNI OFFICE
1301 W. 22nd Street
Suite 905
Oak Brook, Illinois 60523
(630) 623-5300
(630) 623-0808 fax

Ronald McDonald House
near Lurie Children's
211 E. Grand Avenue
Chicago, IL 60611
(312) 888-2500
(312) 464-0689 fax

Ronald McDonald House
near University of Chicago
Corner Children's Hospital
5444 S. Drexel Avenue
Chicago, IL 60615
(773) 324-5437
(773) 493-2905 fax

Ronald McDonald House
near Loyola University
Medical Center
Tripp Ave. at Air Mail Rd.
P. O. Box 7002
Hines, IL 60141
(708) 327-2273
(708) 327-6000 fax

Ronald McDonald House
near Advocate Hope
Children's Hospital
4410 W. 93rd Street
Oak Lawn, IL 60453
(708) 423-5285
(708) 423-5658 fax

Family Room in Edward
Hospital
801 S. Washington Street
Naperville, IL 60540
(630) 527-3800

